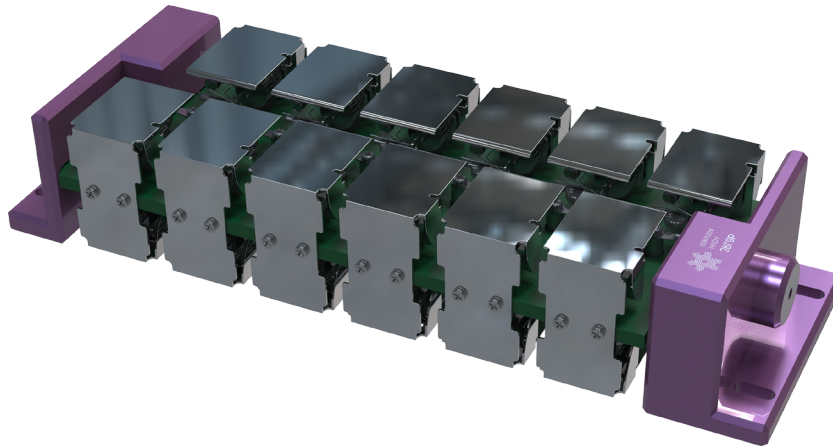
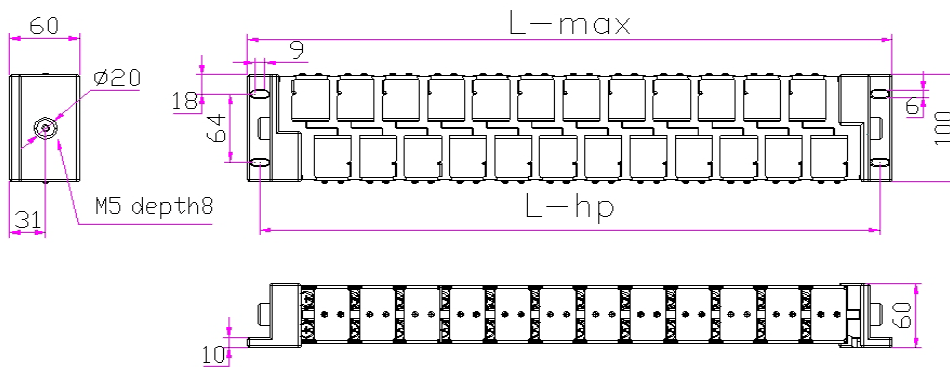




High Voltage High Current R-C compensated , in Copper Coolant Tap/Casing



DIMENSIONS [mm]



Model Nr.	L-max ; total length	L-hp* ; length in clear holes	total width	total height	Termination**	Weight[kg]
HVDA19KV40A	200	179	100	60	M5	1.2
HVDA38KV40A	317	296	100	60	M5	1.9
HVDA76KV40A	557	536	100	60	M5	3.4
HVDA115KV40A	791	770	100	60	M5	5.3
HVDA153KV40A	1,025	1,004	100	60	M5	6.5

* L-hp ; for M5 clear hole to hole in length

**Termination : M5 taps & 8mm deep

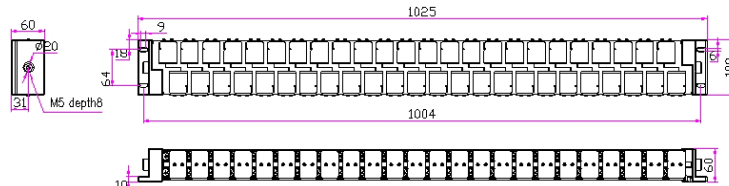
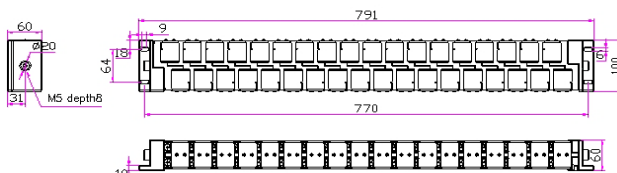
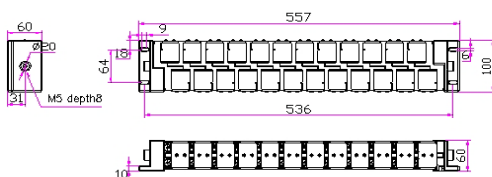
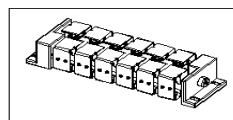
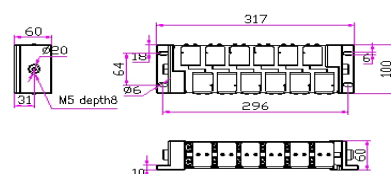
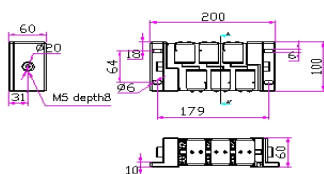
HVDA

High Voltage &
Current Rectifier Assembly



SPECIFICATIONS

Model Nr.	VRRM : Max. Repetive Peak Reverse Voltage [kV]	Avg. Forward Current [A] @70C in coolant tap temp.	IRRM: Max Reverse Current[mA]	IFSM: Max Surge Current[A] for 8.3mS	I ² t [A ² S] at 60Hz	Available Operation Envi-ro-ment	Total Length [mm]
HVDA19KV40A	19	40	4.5	595	1,450	in Air/in Oil	200
HVDA38KV40A	38	40	4.5	595	1,450	in Air/in Oil	317
HVDA76KV40A	76	40	4.5	595	1,450	in Air/in Oil	557
HVDA115KV40A	115	40	4.5	595	1,450	in Air/in Oil	791
HVDA153KV40A	153	40	4.5	595	1,450	in Air/in Oil	1,025



ALL INFORMATION ON THIS FILE IS SUBJECT TO CHANGE WITHOUT PRE-NOTICE.



UPDATE 2022-03-05